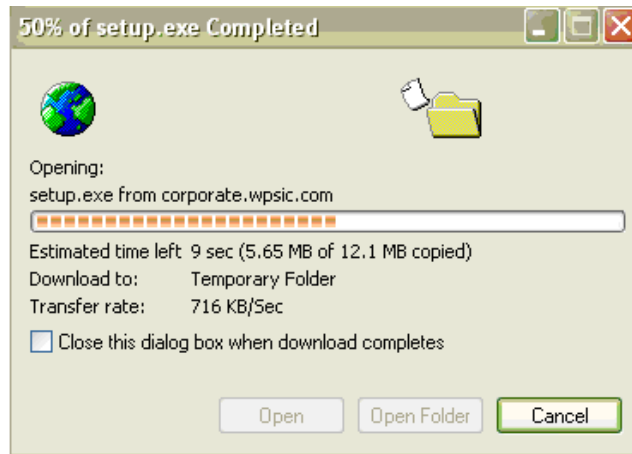


Installation

Complete the following steps to install PC-Ace Pro32:

- Step 1:** Click the link titled “Install PC-Ace Pro 32 Version 1.94”
(The screen shown below will appear.)



- Step 2:** Click “Run”

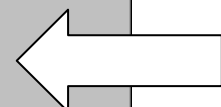
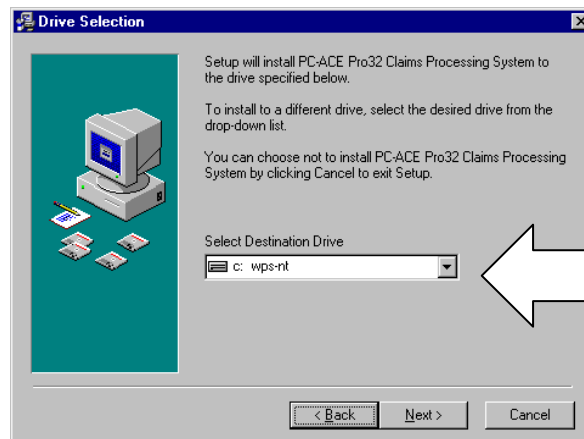


- Step 3:** Type ‘wpsedi1’ (without the quotes). This must be typed in **lower case**.

Note: The password will appear as asterisks (*****) on your screen when you type it.



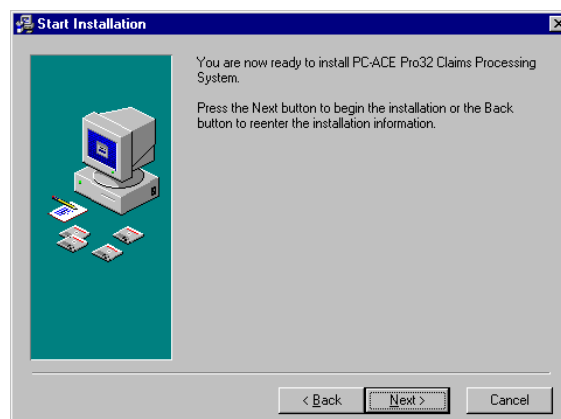
- Step 4:** A window labeled '**Drive Selection**' will appear. PC-Ace Pro32 ***must*** be installed on your systems hard drive (**C**). **DO NOT SELECT A DIFFERENT DRIVE.**




Do not change what appears in the destination drive field

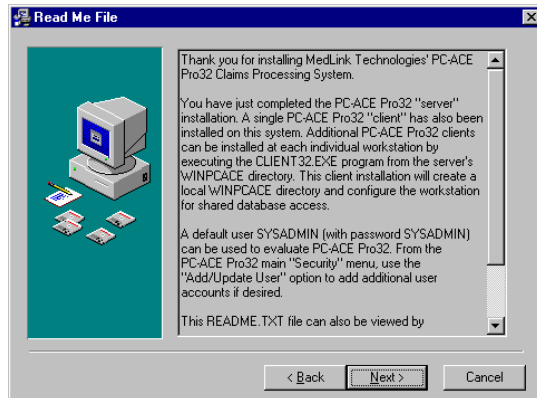
Click on .


- Step 5:** A window labeled '**Start Installation**' will appear.



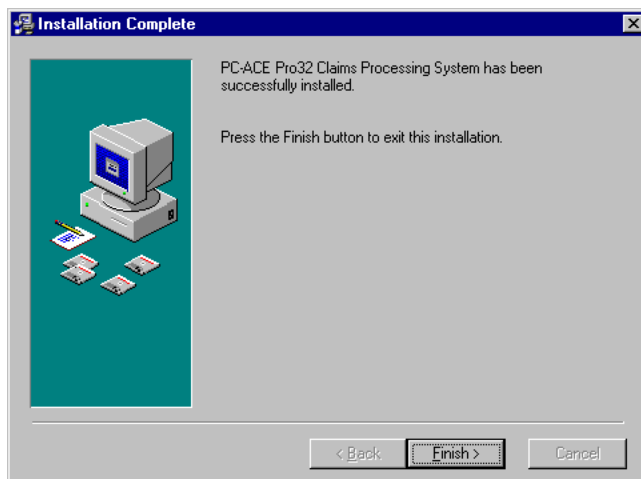
Click on .

- Step 6:** A 'Read Me File' window will now appear. Read this information.



Click on .

- Step 7:** A window labeled 'Installation Complete' will appear.



Click on . A PC-Ace Pro32 icon will appear on your desktop.